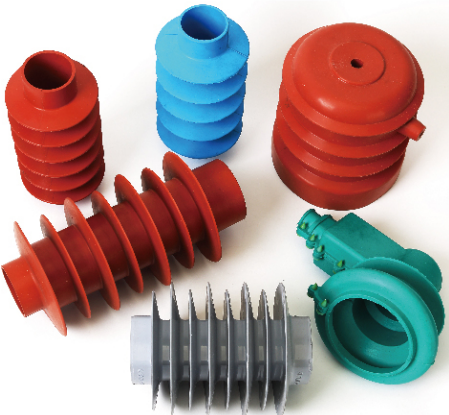
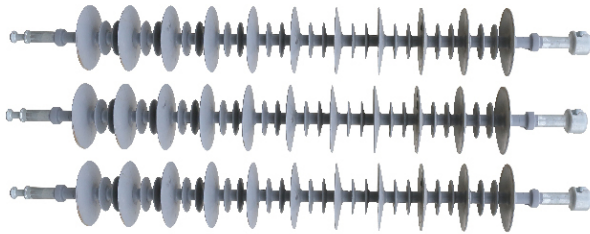


ELECTRICAL INSULATING SILICONE RUBBER



+ Characteristics

- Good processability
- Good electrical insulation properties
- Good tracking & erosion resistance
- Good hydrophobicity and flame retardancy

+ Applications

- Various composite insulators, lightning arresters, insulators and high- & low-voltage electrical fittings for electrical lines of railways and urban light rails.
- Type 1 is applicable to press molding, and Type 2 is applicable to injection molding.

+ Typical Data

Properties	Product Data								Test Method
	Standard Electrical Insulating Rubber		General Purpose Electrical Insulating Rubber		Common Electrical Insulating Rubber				
	NE-T-1 NE-T-1U	NE-T-1 NE-T-1U	NE-C-1 NE-C-1U	NE-C-2 NE-C-2U	NE-D-1 NE-D-1U	NE-D-2 NE-D-2U	NE-E-1 NE-E-1U	NE-E-2 NE-E-2U	
Appearance	Product inherent color, no extraneous matter.								Visual Inspection
Density, g/cm ³	1.48 ~ 1.56								ASTM D792
Hardness, Shore A	62±4				60±4				ASTM D2240
Tensile Strength, MPa ≥	4.5	4.5	4.0						ASTM D412
Elongation at Break, % ≥	260	280	260	280	220	240	220	240	
Tension Set, % ≤	2.0								
Tear Strength, Die C kN/m ≥	13.0						12.0		ASTM D624
Volume Resistivity, Ω·cm ≥	7×10 ¹⁴		5×10 ¹⁴		3×10 ¹⁴		1×10 ¹⁴		IEC 60093
Dielectric Strength, kV/mm ≥	22		20		18				IEC 60243
Dielectric Loss, tg δ ≤	3×10 ⁻²		6×10 ⁻²		7×10 ⁻²				IEC 60250
Dielectric Constant	3 ~ 4								IEC 60587
Tracking Resistance & Erosion resistance	1A4.5 grade		pass						
	Erosion Depth, mm ≤		2.5						
Flame Retardancy, 3mm	FV-0								IEC 60695-11-10

- Physical data in the above table is for reference only.
- Curing condition: 175°C* 5min.
- Ratio of curing agent liquid 2,5-Dimethyl-2,5-di(tert-butylperoxy)hexane: 0.4%.
- The supplied test report is obtained by the Quality Inspection Department with the curing conditions and testing method of the company; due to the difference of curing conditions and testing method, we can't guarantee that both parties obtain the same testing result, and we suggest that users should use the test data obtained under their own testing conditions as the reference for service performance. All the above performance data and application recommendations are only a reference for use on the service performance of product, instead of a guarantee on the effectiveness or general applicability of our products under a certain application.

Silicone Rubber